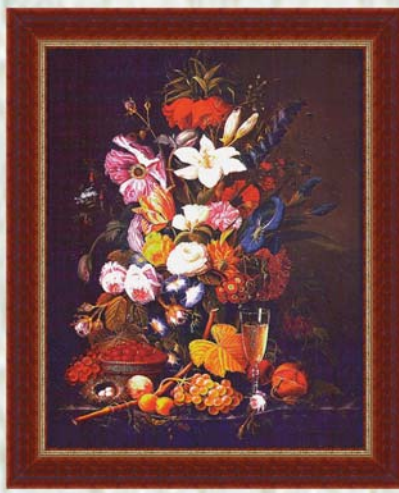
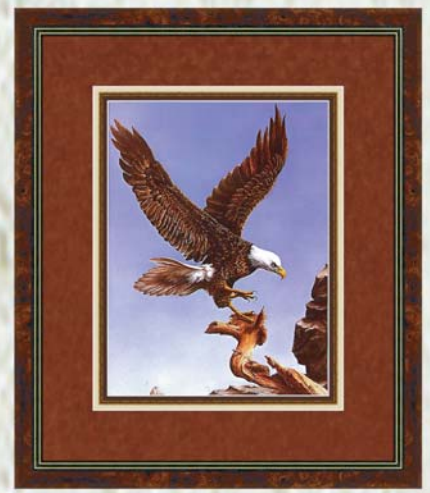




G12-4204 "In The Rose Garden" by Thelma Leaney Butler, an internationally renowned artist of British decent whose paintings are exclusively of English countryside & city scenes. This piece is a lithograph print transferred onto canvas. Frame is wood/mahogany finish w/gold highlighted edge. Framed size is 20" x 24".



G12-4207 "Victorian Bouquet" by Severin Roesen, a 19th Century Great Master. This piece is a lithograph print transferred onto canvas. Frame is wood/sien-na finish w/gold highlighted edge. Framed size is 20" x 24".



G12-4206 "Eagle" by Crystal Skelley, an internationally renowned artist known for the realism displayed in her paintings of florals, birds & their habitat. This piece is triple conservation matted w/suede & gold fillet. Frame is wood/burl finish w/gold highlighted edge. Framed size is 22" x 26".



G12-4203 "Autumn Glade" by Robert Wood, a renowned American (Texas) artist famous for his landscapes. This piece is triple conservation matted w/suede & gold fillet. Frame is wood/burl finish w/gold highlighted edge. Framed size is 22" x 26".

GALLERY COLLECTION

12



G12-4201 "Two's Company" by Carolyn Blish, a contemporary American artist renowned for her delicate mood paintings of children, florals, countryside & seascapes. This piece is triple conservation matted w/suede & gold fillet. Frame is wood/burl finish w/gold highlighted edge. Framed size is 22" x 26".



G12-9259 "Winter Hideaway" by Bill Haas, an Internationally renowned artist who paints everything from landscapes to seascapes and contemporary to abstracts. This piece is triple conservation matted w/suede & gold fillet. Frame is mahogany cascade finish. Framed size is 27" x 23".



G12-4208 "Boats at Saint-Maries, 1888" by Vincent Van Gogh, one of the world's Great Old Masters. This piece is a lithograph print transferred onto canvas. Frame is wood/mahogany finish, w/gold highlighted edge. Framed size is 20" x 24".