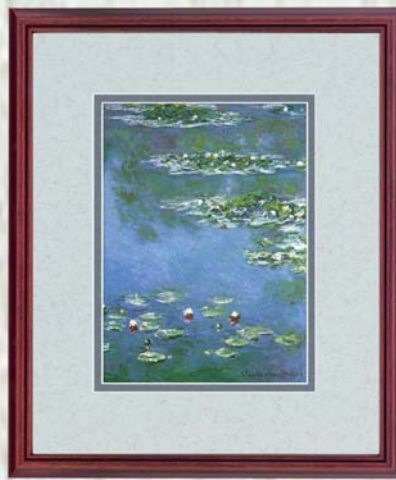




**M2-8250** "Dare To Fly" by Richard Plasschaert, a Federal Duck Stamp competition winner and also the winner of numerous State Duck Stamp competitions. This piece is double acid free conservation matted. Frame is wood with rosewood finish. Framed size is 12" x 13".



**M2-3402** "Waterlilies" by Claude Monet, one of the world's Great Old Masters. This piece is double acid free conservation matted. Frame is wood with rosewood finish. Framed size is 12" x 13".



**M2-8017** "Evening" by Sandra L. Rolf, An artist who likes to catch and hold onto the memories of the past in her paintings. She is a student and daughter of nationally renowned artist Ken Zylla. This piece is double acid free conservation matted. Frame is wood with rosewood finish. Framed size is 12" x 13".



**M2-8258** "Winter Hideaway" by Bill Haas, an Internationally renowned artist who paints everything from landscapes to seascapes and contemporary to abstracts. This piece is double acid free conservation matted. Frame is wood with rosewood finish. Framed size is 12" x 13".

# MILLENNIUM COLLECTION

2



**M2-8256** "Enchanted Moonlight" by Bill Haas, an Internationally renowned artist who paints everything from landscapes to seascapes and contemporary to abstracts. This piece is double acid free conservation matted. Frame is wood with rosewood finish. Framed size is 12" x 13".



**M2-8252** "Flowers And Butterflies" by T.C. Chiu, a renowned China-born artist. His work is a combination of traditional realism and contemporary painting techniques. This piece is double acid free conservation matted. Frame is wood with rosewood finish. Framed size is 12" x 13".



**M2-8016** "Flowers And Birds" by T.C. Chiu, a renowned China-born artist. His work is a combination of traditional realism and contemporary painting techniques. This piece is double acid free conservation matted. Frame is wood with rosewood finish. Framed size is 12" x 13".



**M2-3304** "On The Prowl" by Richard Plasschaert, a Federal Duck Stamp competition winner and also the winner of numerous State Duck Stamp competitions. This piece is double acid free conservation matted. Frame is wood with rosewood finish. Framed size is 12" x 13".