



M6-8711 "Evening Solitude" by T.C. Chiu, a renowned China-born artist. His work is a combination of traditional realism and contemporary painting techniques. This piece is double acid free conservation matted. Frame is wood with oak finish. Framed size is 16" x 18".



M6-8513 "Pansies" by Crystal Skelley, an internationally renowned artist known for the realism displayed in her paintings of florals, birds & their habitat. This piece is double acid free conservation matted. Frame is wood with mahogany cascade finish. Framed size is 16" x 18".



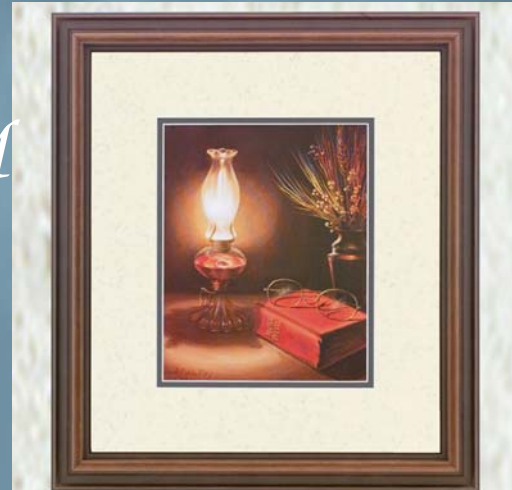
M6-8713 "Lake Side" by Sandra L. Rolf, An artist who likes to catch and hold onto the memories of the past in her paintings. She is a student and daughter of nationally renowned artist Ken Zylla. This piece is double acid free conservation matted. Frame is wood with oak finish. Framed size is 16" x 18".



M6-3508 "Enchanted Passage" by Derk Hansen, a renowned German-born artist whose talents are dedicated to wildlife & the Old West. This piece is double acid free conservation matted. Frame is wood with highlighted walnut finish. Framed size is 16" x 18".

MILLENNIUM COLLECTION

6



M6-8718 "Peace" by Crystal Skelley, an internationally renowned artist known for the realism displayed in her paintings of florals, birds & their habitat. This piece is double acid free conservation matted. Frame is wood with highlighted walnut finish. Framed size is 16" x 18".



M6-8761 "A Moonlit Sail" by Bill Haas, an Internationally renowned artist who paints everything from landscapes to seascapes and contemporary to abstracts. This piece is double acid free conservation matted. Frame is wood with rosewood finish. Framed size is 16" x 18".



M6-8512 "Waterfront Mill" by Doug Tope, a California born artist. Nationally renowned, he has a way of reflecting his feelings and bringing a memory back to life in his paintings. This piece is double acid free conservation matted. Frame is wood with oak finish. Framed size is 16" x 18".



M6-8712 "Days End", by Sandra L. Rolf, An artist who likes to catch and hold onto the memories of the past in her paintings. She is a student and daughter of nationally renowned artist Ken Zylla. This piece is double acid free conservation matted. Frame is wood with rosewood finish. Framed size is 16" x 18".